



2020-2021 Return to Curl at the Ottawa Curling Club

SUBJECT TO CHANGE

If you have questions, please submit them to Dalal (Club Manager) manager@ottawacurlingclub.com
A FAQ document will be going up on the OCC website as questions and answers are received.

Introduction

This document outlines the Return to Curl policies and procedures that will be put into place at the Ottawa Curling Club (OCC) in the COVID-19 context. The OCC goal is to prioritize the health and wellbeing of members, staff and curling community while maintaining the financial viability of the Club.

The OCC must adhere to:

- The laws of the Province of Ontario (Reg. 364/20) and the bylaws of the City of Ottawa, including Ottawa 2020-186 (Temporary Mandatory Face Mask).

The Board is following:

- The recommendations of Ottawa Public Health and the Guidelines for Return to Play published by Curling Canada and CurlION.

As regulations and recommended practices regarding COVID-19 are constantly changing, the OCC Board of Directors and Club Manager may update the policies and procedures outlined below. As such, this document is evergreen and subject to change. Members and rental leagues will receive updates as needed.

Financial Considerations

The Board feels confident that we can open this season and maintain the financial viability of the Club, although there will be a significant impact on our typical costs and revenue. If at any time the financial viability of the Club comes into question as a result of these or other costs associated with COVID-19, the Board may choose to discontinue the season.

Additional costs to the club associated with COVID-19:

- Hiring of additional cleaning staff and cleaning supplies
- Purchasing of PPE for staff (masks, gloves)
- Purchasing hand sanitizer

Loss of revenue associated with COVID-19:

- Lower registration numbers as a result of members choosing not to return due to COVID-19
- Limit of 50 people (not including staff) in the lounge and other heated areas of the Club. Note: there is also a limit of 50 people in the ice shed.

- Reduced revenue associated with the bar due to restrictions, including capacity limits and time restrictions
- Reduced overall revenue associated with elimination and restrictions on events and rentals

All members must pay fees or arrange payment of fees with the Club Manager by September 30, 2020 – no exceptions. Members who have already made a payment for the 2020-21 season and decide they do not want to participate this season must notify the Manager by September 30, 2020 in order to receive a full refund. After this date, only partial refunds may be considered. If the Club needs to be closed as a result of a COVID-19 outbreak or change in legal requirements (i.e. Ontario laws or Ottawa by-laws), the Board will evaluate the situation to determine if and what refunds may be made while ensuring the continued financial viability of the Club.

COVID-19 Policies and Procedures

Risk Mitigation

1. All players must sign a liability waiver that now includes risk to COVID-19 exposure before entering the club.
2. All players sign this to acknowledge their responsibility to comply with protocols established, that to their knowledge have not been exposed to COVID-19, and that they are accepting liability for the possibility of contracting COVID-19.
3. Members and rental leagues will be notified in plain language that the OCC may close without warning for a couple of days or for the season for reasons related to COVID-19.

Timing

1. The schedule has been re-structured to allow 30 minutes between games for cleaning and movement of players between areas of the Club. Only staff are allowed on the ice between games.
2. Each draw will have a dedicated time for on-ice play. There is no flexibility to continue beyond the allotted time. If an end is in progress at the end of the time slot, it will be immediately discontinued and not count toward the game result. Skips are responsible for agreeing on an appropriate end of play to accommodate this rule.
3. The new schedule will be posted on the OCC website in October 2020. Start and end times may be slightly altered from previous years' schedules. To date, we are able to maintain 2 hour draw times for all OCC leagues.

Building

1. The Building – see Appendix I: Ottawa Curling Club proposed floor plan.
 - a. Masks are required in the building unless eating or drinking or playing on the ice as per Ottawa Public Health recommendations.
 - b. Players are not permitted in the Club more than 20 minutes prior to the player's scheduled game, and more than 60 minutes after the player's scheduled game.
 - c. Contact Tracing - skips will be notified if a COVID-19 case was in the building on the day that their team played and are responsible to flow the information to who was playing that day.

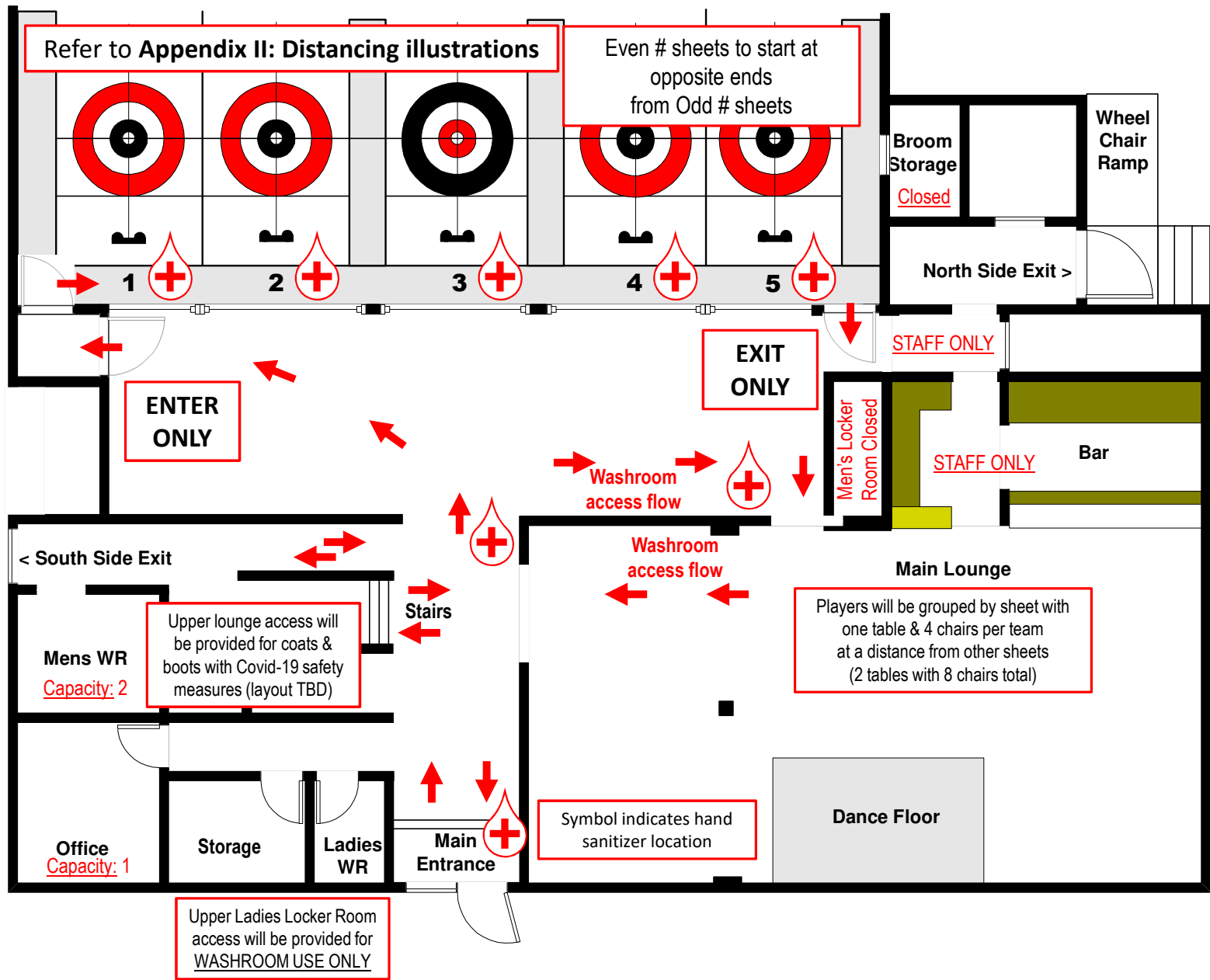
- d. Only scheduled players are permitted in the Club. No guests, including children and family members of players, will be allowed in the Club.
 - e. The building will be clearly marked with adequate signage to ensure appropriate flow through the facility. The goal is that the group of people leaving the ice will not be in contact with the group of people getting ready to curl. Also, the people in the lounge will depart the Club prior to curlers getting off the ice and prior to the arrival of people getting ready to curl.
 - f. Bulletin boards will not be used, all scores must be entered online (exact protocols to be determined). The schedule will be posted on the OCC website.
 - g. Only intra club curling and seasonal rental will be scheduled (no outside ice rentals).
2. Washrooms and locker rooms
- a. Locker rooms will be closed for the season, with the exception of access to the washrooms in the ladies locker room.
 - b. Players are to arrive at the club dressed and ready to curl (other than shoes).
 - c. Upper lounge access will be provided for coats and boots storage.
 - d. More frequent cleaning will be done in the washrooms.
 - e. Maximum of two people in the washroom at a time.
3. Equipment
- a. No loaner equipment will be available including sticks, brooms, stabilizers, sliders, grippers.
 - b. Only the Ice Technicians will have access to their room.
 - c. Players should not touch or lean on ice maintenance equipment stored on the ice.
 - d. Rocks will be cleaned by players before the game and after. Only touch your own rocks.
 - e. Sanitize your hands before and after measuring. Only thirds can measure rocks.
4. Game play
- a. League schedules and structure will be adapted to adhere to restrictions imposed by the City of Ottawa and Province, which only allow for 50 people per league. Convenors will provide skips with league-specific information.
 - b. Practice ice and make-up games shall be scheduled with the Manager.
 - c. Sheets two and four will start at the far end of the Ice Shed to minimize number of people at the window end at the start of the game. Staff will usher teams into the Ice Shed at the appropriate time with an approach that also helps to maintain physical distancing.
 - d. No handshakes or fist bumps, tap brooms instead.
 - e. Last rock will be indicated in the schedules. Coin tosses are not to be used.
 - f. All leagues will allow 4-person teams.
 - i. Only a single player can sweep the rock, the other player stands at the backboards. No switching sweepers during a play. The person in the house may not come out to sweep.

- ii. One skip in the house at a time. The non-delivering team skip will stay out of the house until the delivering skip relinquishes control of the house when all stones have stopped moving.
 - iii. Neither skip is allowed to sweep at any time.
 - iv. Areas will be marked on the ice where all players should stand between shots. See Appendix II: Distancing illustrations.
 - v. In order to adhere to the 50 player maximum per league, spares must be players from the same league.
5. On Ice protocols
- a. Enter the ice at the door near sheet one; exit at the door near sheet five.
 - b. Hand sanitizer will be added on ice everywhere tissues were previously located.
 - c. Tissues will not be provided.
 - d. Water will not be available on ice. Bring your own full water bottle.
6. Lounge/Bar
- a. Limitation on time spent socializing after game, 60 minutes to avoid going over building capacity and giving bar staff enough time to clean.
 - b. Table service will be provided in the lounge
 - c. Coffee will be served by bartenders.
 - d. No prepared food will be served. Single serving snacks will be available for purchase.
 - e. Bar tabs are strongly recommended. Payment by credit card, debit card, or cash will be available (bartenders will be trained on safe handling of cash).
 - f. The bar and lounge area will be thoroughly cleaned between each draw.
 - g. Couches and viewing chairs will be removed.
 - h. For post-game social in the lounge, players will be grouped by sheet with one table and 4 chairs per team at a distance from other sheets (2 tables with 8 chairs total).

Responsibilities of Members and Rental Leagues

1. Players are only permitted in the Club 20 minutes in advance of a scheduled game, and only 60 minutes subsequent to a scheduled game.
2. Come prepared to curl, only needing to put on your shoes, gloves, safety wear.
3. Masks are mandatory at all times in the Club, with the exception of in the Ice Shed during game play or drinking/eating while seated in the lounge.
4. Employ physical distancing as much as possible.
5. Stay home if not feeling well – find a spare from your league if possible. .
6. Use the cleaning and sanitizing supplies that the Club will provide
7. Only touch your own equipment – brooms, stabilizers, delivery sticks, etc.
8. Bring your own water and tissues.
9. Be patient with all staff and other players as we get used to these new protocols.

Appendix I: Ottawa Curling Club proposed floor plan



Appendix II: Distancing illustrations

